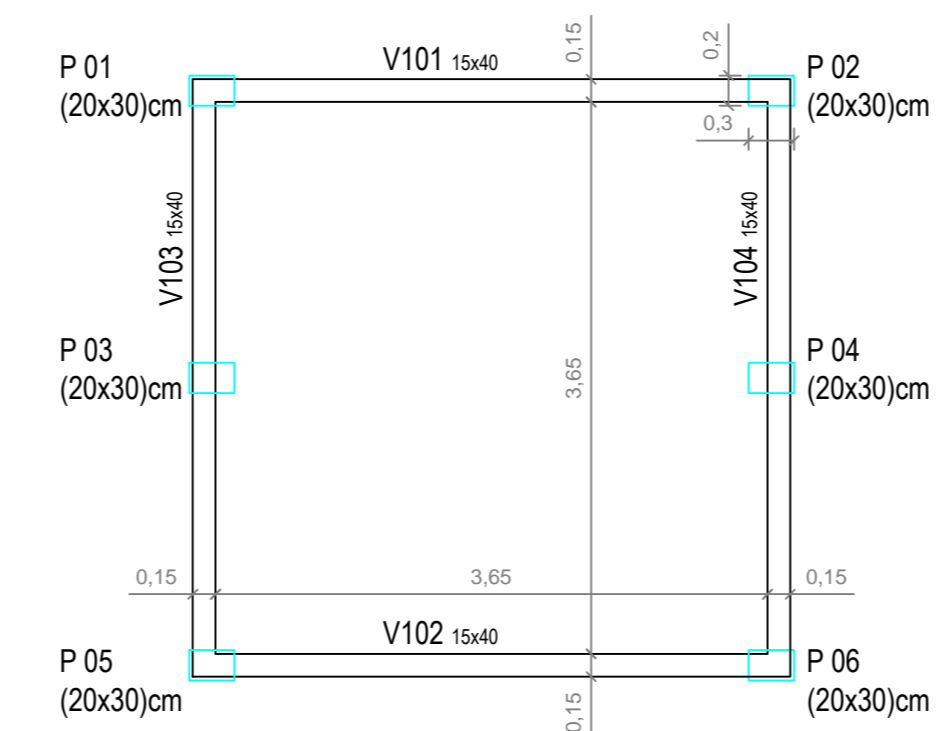
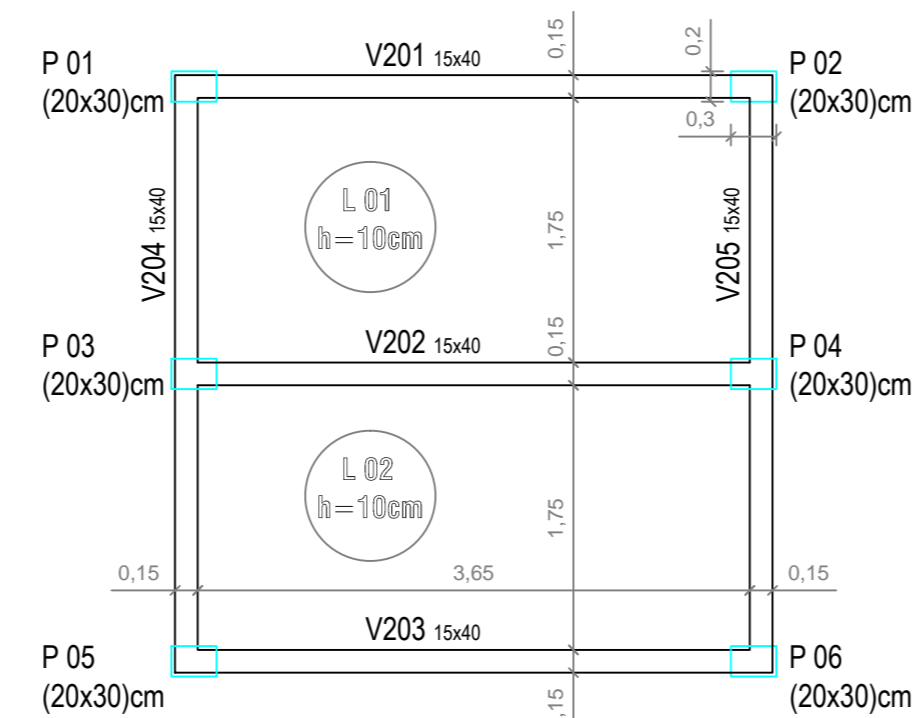


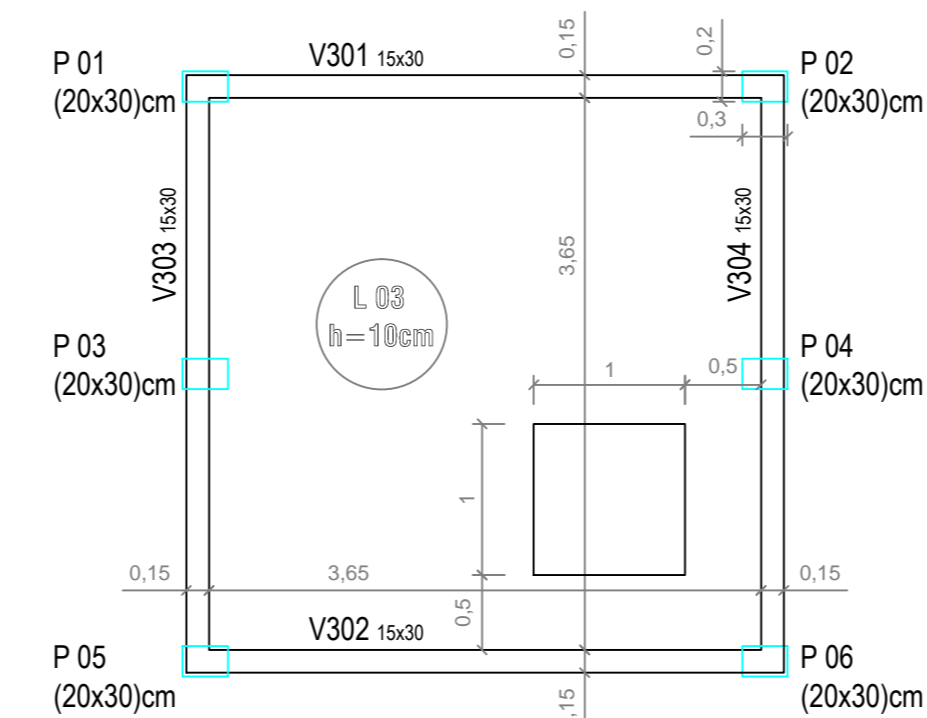
1 Formas - Nível 000
escala 1:25



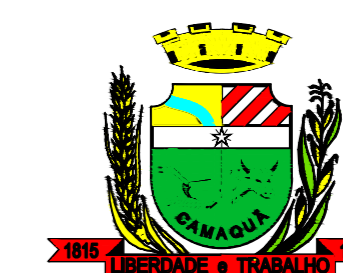
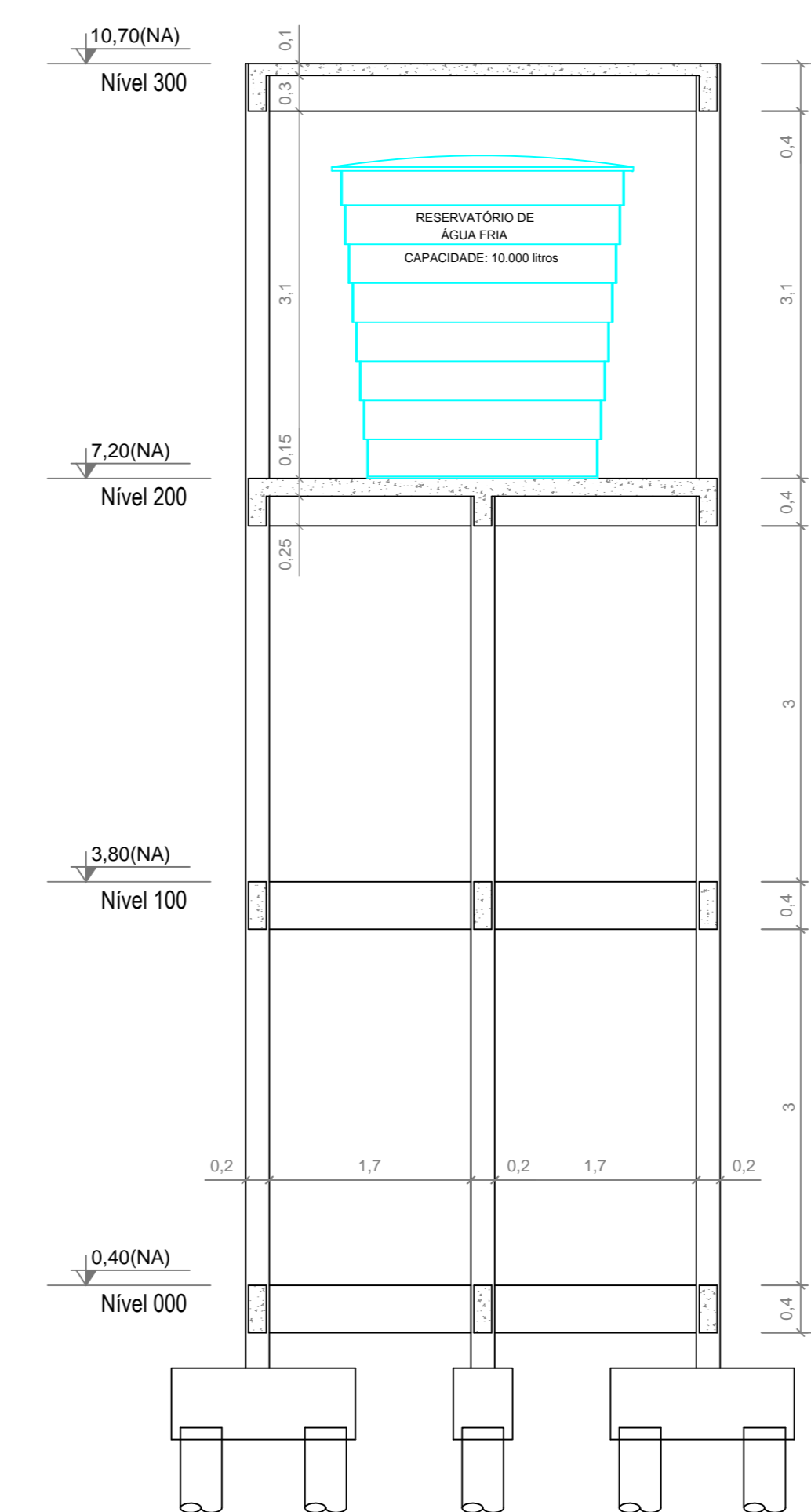
2 Formas - Nível 100
escala 1:25




3 Formas - Nível 200
escala 1:25



4 Formas - Nível 300
escala 1:25



ESTADO DO RIO GRANDE DO SUL
PREFEITURA MUNICIPAL DE CAMAQUÃ
SECRETARIA MUNICIPAL DA INFRAESTRUTURA

Objeto: PROJETO DE DRENAGEM			
Endereço: Bairro Vila Nova - Camaquã, RS		Escala: 1/1000	
Proponente: Prefeitura Municipal de Camaquã - CNPJ: 88696810/0001-75		Data: 15/07/2014 Dim: 683x518mm	
Resp. Técnico: Geovana Monte Silveira - CREA: 133364		Assinatura: DrenagemVnovo.rtg	
Prancha: Rede de Drenagem		Desenho: Geovana	
		Prancha: 03	